

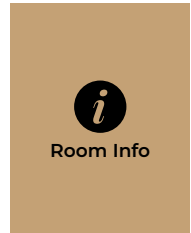
CONCA D'ORO  
**The Renoir**

---

FACT SHEET & FLOOR PLANS

CONCA D'ORO  
**The Renoir**

**NAVARRA**  
EST 1973



Room Info



Room Specs

CAPACITIES



Dinner & Dance  
**150 – 270**



Banquet Dinner  
**170 – 280**



Cocktail Party  
**100 – 500**



Theatre Seating  
**100 – 400**

FEATURES

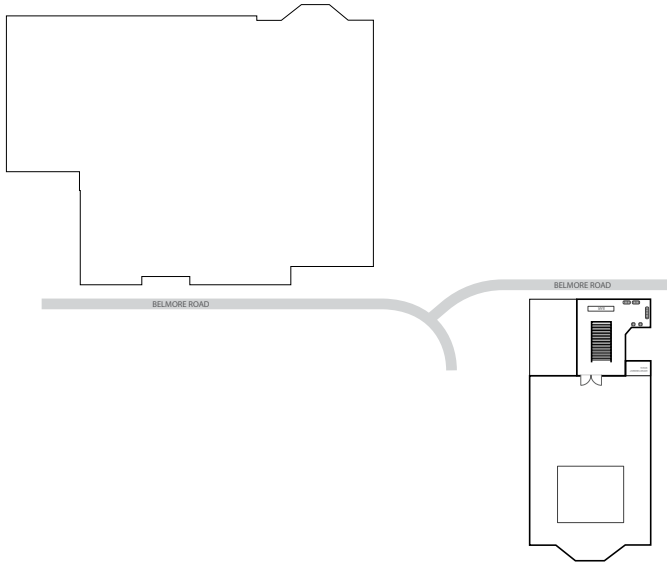
- Elegant foyer for welcome drinks
- A collection of Swarovski crystal chandeliers
- Dark timber panelling
- Silver patterned diamond wallpaper
- Large ornate mirrors throughout ballroom

CONTACT US

- Conca D'oro  
269 Belmore Rd  
Riverwood, NSW 2210
- 02 9153 9932  
concaodoro@navarravenues.com.au  
navarravenues.com.au

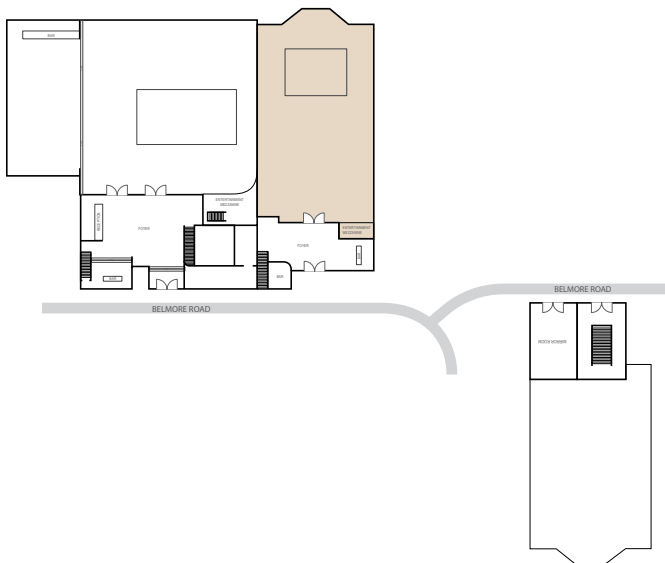
VENUE MAP

LEVEL ONE



GROUND LEVEL

■ The Renoir

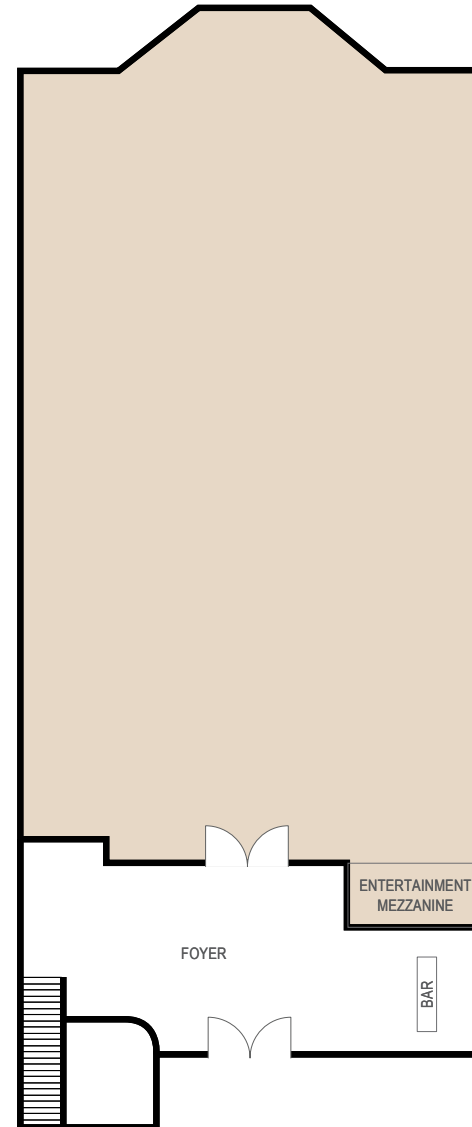


ROOM SPECS

■ Ceiling Height  
**4.1 m**

■ Floor Area  
**260 m<sup>2</sup>**

■ Dance Floor Area  
**10.2m x 5.9m**



Room Info



Room Specs

CAPACITIES



Dinner & Dance  
**150 – 270**



Banquet Dinner  
**170 – 280**



Cocktail Party  
**100 – 500**



Theatre Seating  
**100 – 400**

CONCA D'ORO  
**The Renoir**

**NAVARRA**  
 EST 1973

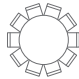
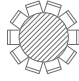
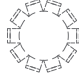
**PAX PER TABLE**

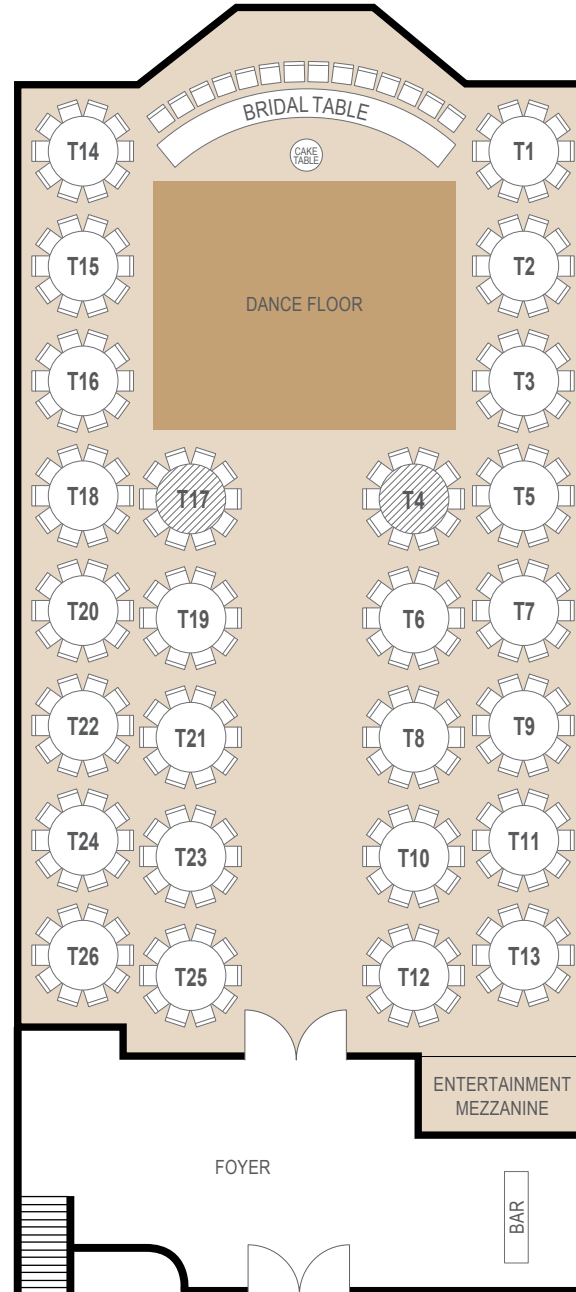
- Round Tables  
**8 Min – 10 Max**
- VIP/Bridal Table  
**18 Max**

**SUITABLE FOR**

- Weddings
- Gala Dinners

**LEGEND**

-  Round Table
-  Don't use unless necessary
-  Alternative arrangement using Round Table instead



Room Info



Room Specs

**CAPACITIES**



Dinner & Dance  
**150 – 270**



Banquet Dinner  
**170 – 280**



Cocktail Party  
**100 – 500**



Theatre Seating  
**100 – 400**

**FOR OFFICIAL USE**

Event Name

Event Date

Please indicate on your floorplan additional requirements eg. band, photobooth, etc. These are subject to approval by your event stylist and coordinator.

CONCA D'ORO  
**The Renoir**

PAX PER TABLE

Round Tables  
**8 Min – 10 Max**


VIP/Bridal Table  
**18 Max**

SUITABLE FOR

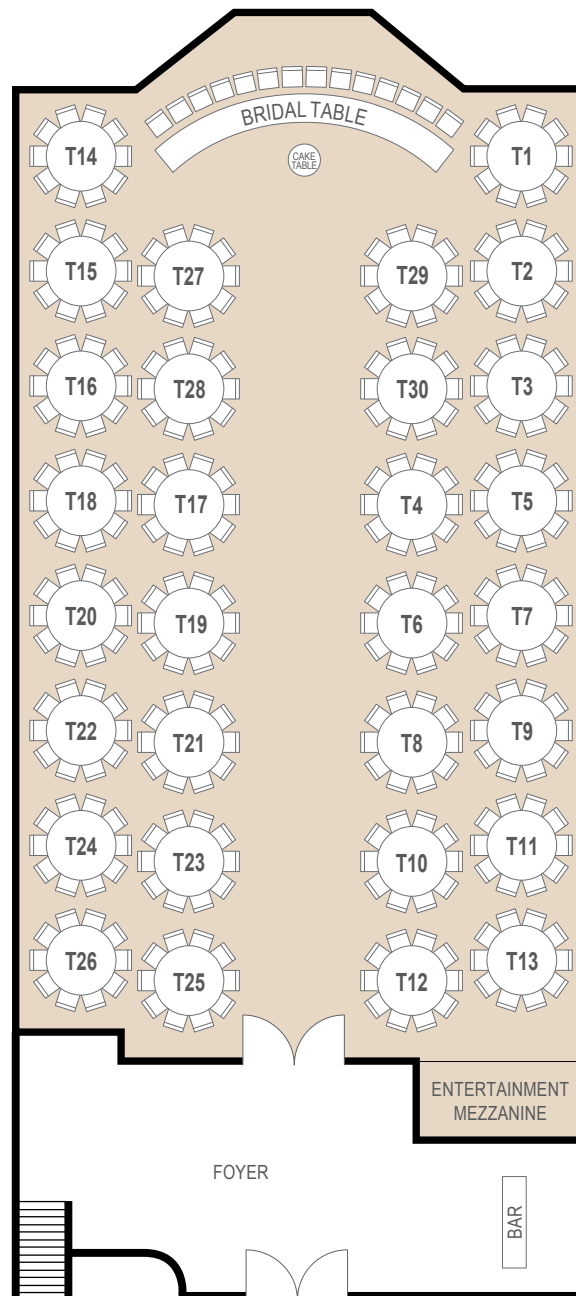
Corporate Events

LEGEND

 Round Table

 Don't use unless necessary

 Alternative arrangement using Round Table instead



**NAVARRA**

EST 1973



Room Info



Room Specs

CAPACITIES



Dinner & Dance  
**150 – 270**



Banquet Dinner  
**170 – 280**



Cocktail Party  
**100 – 500**



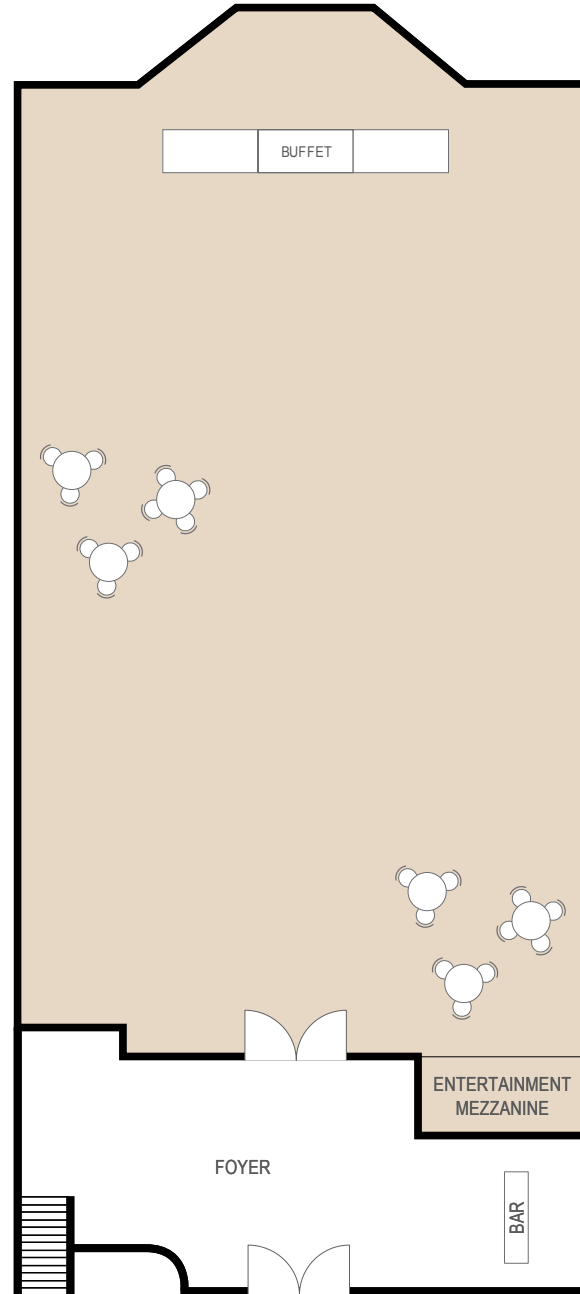
Theatre Seating  
**100 – 400**

FOR OFFICIAL USE

Event Name

Event Date

Please indicate on your floorplan additional requirements eg. band, photobooth, etc. These are subject to approval by your event stylist and coordinator.



Room Info



Room Specs

CAPACITIES



Dinner & Dance  
150 – 270



Banquet Dinner  
170 – 280



Cocktail Party  
100 – 500



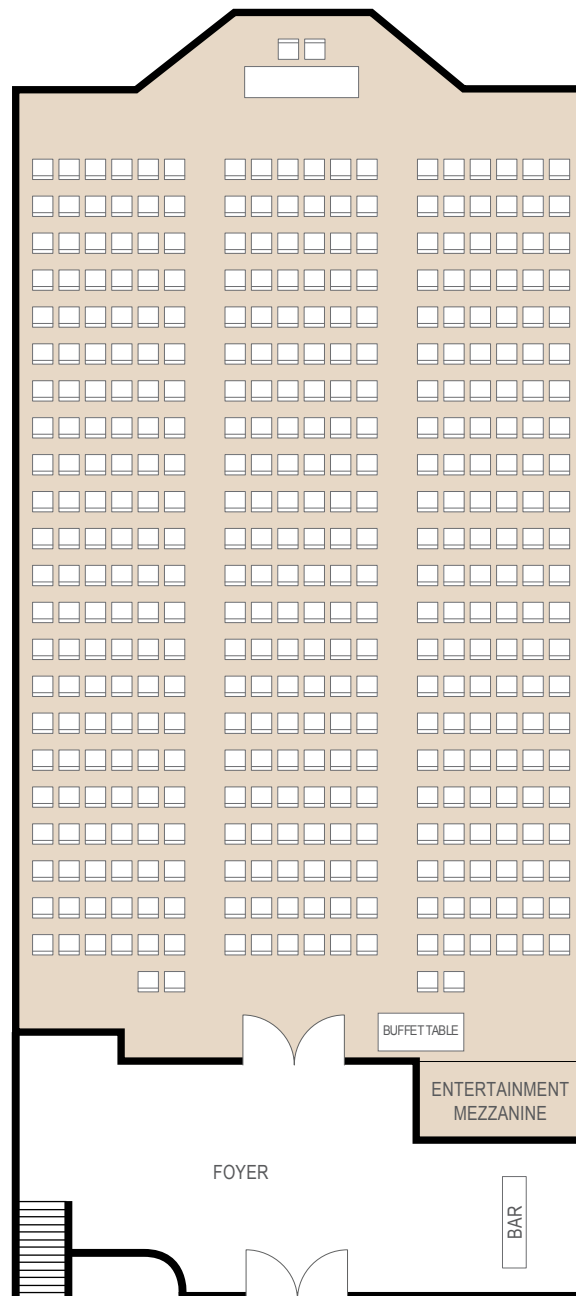
Theatre Seating  
100 – 400

FOR OFFICIAL USE

Event Name

Event Date

Please indicate on your floorplan additional requirements eg. band, photobooth, etc. These are subject to approval by your event stylist and coordinator.



Room Info



Room Specs

CAPACITIES



Dinner & Dance  
150 – 270



Banquet Dinner  
170 – 280



Cocktail Party  
100 – 500



Theatre Seating  
100 – 400

FOR OFFICIAL USE

Event Name

Event Date

Please indicate on your floorplan additional requirements eg. band, photobooth, etc. These are subject to approval by your event stylist and coordinator.